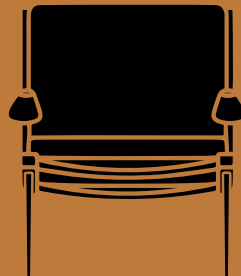
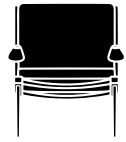


Boomerang<sup>HM2</sup>  
Hvidt & Mølgaard  
1956





D: 79cm / 31in  
Seating D: 50cm / 19.7in  
Armrest H: 58cm / 22.8in



W: 69cm / 27.2in  
Seating H: 42cm / 16.5in

H: 80cm / 31.5in

# Boomerang<sup>HM2</sup> Hvidt & Mølgaard 1956

## Product category

Lounge chair

## Environment

Indoor

## Material

Wood, HR foam, polyester wadding, fabric upholstery, brass or stainless steel.

## Production process

The frame is made from milled solid wood and the spring wires are made from plastic covered coiled spring steel. All fittings are made from lasercut metal and the brass or stainless steel legs are coned using a special tool.

## COM - Material Consumption

Fabric usage: 2m based on a 140cm roll  
COM must be approved by &Tradition to ensure suitability for upholstery.

## Gliders

Plastic gliders installed as standard.

## Dimensions

D: 79cm / 31in, W: 69cm / 27.2in, Seating H: 42cm / 16.5in, Armrest H: 58cm / 22.8in, Seating D: 50cm / 19.7in

## Packaging dimensions

Frame: H: 81cm / 31.9in, W: 79cm / 31.1,  
D: 80cm / 31.5in  
Cushions: H: 11cm / 4.3in, W: 58cm / 22.8in,  
D: 58cm / 22.8in

## Colli quantity

2 pcs

## Weight

Product: 9.6 kg / Incl. packaging: 12.1 kg

## Wood finishes

Oiled oak or walnut frame.

## Leg finishes

Brass or Stainless Steel

## Cleaning instructions

Please download our Material Care & Cleaning instructions through [www.andtradition.com](http://www.andtradition.com)

## → Stock items

Karakorum 003 with Oiled oak or Oiled walnut. Brass or Stainless Steel legs.

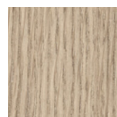
## Related products



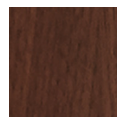
HM1



## Stock items / Wood finishes



Oiled oak



Oiled walnut

## Stock items / Leg finishes



Brass



Stainless Steel

## Stock items / Upholstery



→ Karakorum  
003

&Tradition<sup>®</sup>